



Lower Santa Ysabel Truck Trail

[In Pamo Valley]

ACCESS: From Hwy 67 (Main Street) in Ramona, west on Hwy 78 (10th Street), right on Haverford Road, and left on Pamo Road. Continue 2.6 miles to the Pamo Road entrance to the Lower Santa Ysabel Truck Trail. An Adventure Pass is required to park (see “Appendix A” for further details).

LENGTH AND ELEVATION: 2.2 miles one way; 850’ to 975’.

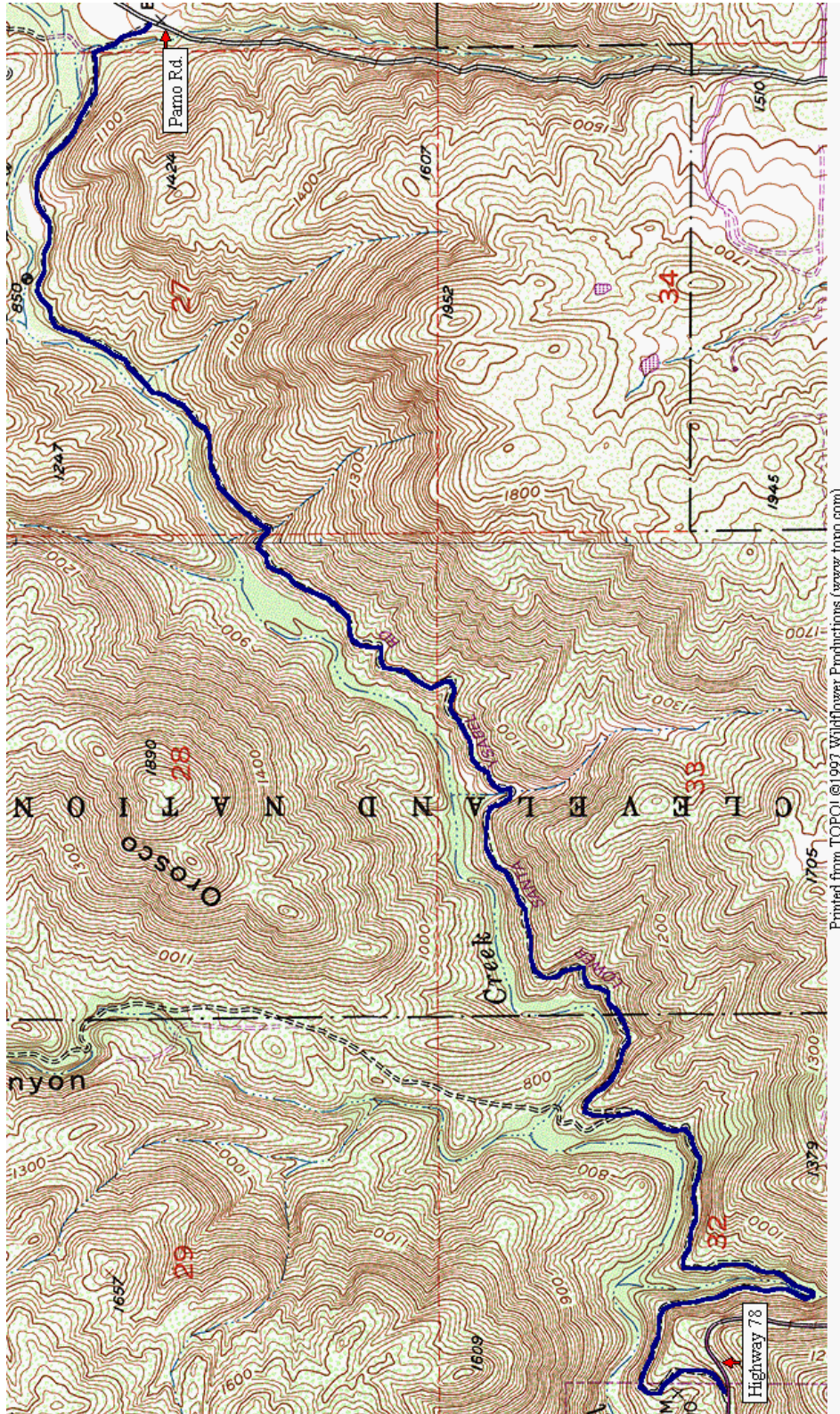
DESCRIPTION: The Lower Santa Ysabel Truck Trail (LSYTT) is part of the Cleveland National Forest. The trails in this area will provide one of the links in the San Dieguito River Park's "Coast-to-Crest" trail system.

A cattle guard exists on the access road; there is room for a couple of small horse trailers further into the wood line, at the point where the road splits. The split to the right, Orosco Ridge, is open to motorized vehicles and is popular with off-roaders and shooters. For non-motorized trail users, the fork to the left, LSYTT, is strongly recommended. A gate at the bottom prevents motorized access.

The trail follows the old truck trail, is an easy climb to the boundary point with Fish & Game property in Bowden Canyon. Currently, a gate blocks further access by equestrians with steep banks on either side, but hikers and mountain bikers can probably negotiate it. When the River Park completes this section, the gate will be removed and access for all will be available into Bowden Canyon and San Pasqual Valley. There is no loop yet, but plans include a trail from LSYTT to connect to Pine Pathway. Get involved as an RTA volunteer and help make this happen faster!

RECOMMENDED USES: This truck trail is excellent for all categories of non-motorized recreational use.

Lower Santa Ysabel Truck Trail



Printed from TOPO! ©1997 Wildflower Productions (www.topo.com)